

Memorandum of Easements			
(Pursuant to s243 Resource Management Act 1991)			
Purpose	Shown	Servient Tenement	Dominant Tenement
Right of Way Right to convey water, electricity, gas, telecommunications and computer media	RA	Lot 209 hereon	Lot 99, 100, 103 & 104 hereon
	RB	Lot 94 hereon	Lots 95 hereon
	RC	Lot 91 hereon	Lots 88 hereon
	RD		
	RE	Lot 80 hereon	Lots 89 hereon
	RF	Lot 74 hereon	Lot 75 & 79 hereon
	RG	Lot 71 hereon	Lot 72 & 171 hereon
	RH		Lot 171 hereon
	I		
	RI	Lot 170 hereon	Lot 64 hereon
	RJ		
	RK	Lot 62 hereon	Lot 61 & 63 hereon
	RL		
	J		
	K		
L			
Right to drain sewage and water	AA	Lot 98 hereon	Lot 97 hereon
	AF	Lot 92 hereon	Lot 93 hereon
	AH	Lot 86 hereon	Lot 87 hereon
	CD	Lot 71 hereon	Lot 64 hereon
	DB	Lot 74 hereon	Lot 73 hereon
	J	Lot 62 hereon	Lot 61 hereon
Right to drain sewage	BD	Lot 95 hereon	Lot 100 hereon
	CK	Lot 65 hereon	Lot 60 hereon

DP 442029 - CSD Plan  
 Generated on 22/12/2011 3:37pm  
 Page 34 of 65

<b>Memorandum of Easements in Gross</b>			
<small>(Pursuant to s243 Resource Management Act 1991)</small>			
<b>Purpose</b>	<b>Shown</b>	<b>Servient Tenement</b>	<b>Grantee</b>
Right to drain sewage and water	CR	Lot 55 hereon	Porirua City Council
	CQ		
	CP	Lot 56 hereon	
	CO	Lot 57 hereon	
	CN	Lot 58 hereon	
	CM	Lot 59 hereon	
	CT	Lot 62 hereon	
	CU		
	CZ	Lot 65 hereon	
	CJ	Lot 66 hereon	
	CI	Lot 67 hereon	
	CF	Lot 68 hereon	
	CE	Lot 69 hereon	
	CC		
	CB	Lot 70 hereon	
	I	Lot 71 hereon	
	AV	Lot 72 hereon	
	AQ	Lot 74 hereon	
	RF		
	AS	Lot 75 hereon	
	AR		
	AP	Lot 76 hereon	
	AO	Lot 77 hereon	
	AN	Lot 78 hereon	
	RE	Lot 80 hereon	
	AM	Lot 81 hereon	
	AL	Lot 82 hereon	
	AK	Lot 83 hereon	
	AJ	Lot 84 hereon	
	AI	Lot 85 hereon	
	DA	Lot 86 hereon	
	AG	Lot 89 hereon	
	VJ		
	RD	Lot 91 hereon	
AE			
BI			
VI			
VF	Lot 94 hereon		
BF			
RB			
AD	Lot 170 hereon		
RJ			
CA	Lot 171 hereon		
RA	Lot 209 hereon		
CS	Lot 303 hereon		
AT	Lot 304 hereon		

Memorandum of Easements in Gross			
(Pursuant to s243 Resource Management Act 1991)			
Purpose	Shown	Servient Tenement	Grantee
Right to drain water	BS	Lot 57 hereon	Porirua City Council
	CY		
	CL	Lot 60 hereon	
	CW	Lot 62 hereon	
	K		
	L		
	BZ	Lot 63 hereon	
	CH	Lot 67 hereon	
	CG	Lot 68 hereon	
	OB	Lot 75 hereon	
	OC		
	OA	Lot 79 hereon	
	OD		
	AC	Lot 103 hereon	
	BB		
	VB		
	WB	Lot 301 hereon	
CV			
AU			
AW	Lot 304 hereon		
Right to drain sewage	AZ	Lot 63 hereon	Porirua City Council
	AY	Lot 64 hereon	
	GF		
	AX	Lot 71 hereon	
	BD	Lot 95 hereon	
	VE		
	AB	Lot 99 hereon	
	CX	Lot 304 hereon	
Right to convey gas	GB	Lot 61 hereon	Vector Gas Limited
	RK	Lot 62 hereon	
	RL		
	J		
	K		
	L	Lot 64 hereon	
	GE		
	GF		
	GG	Lot 170 hereon	
	GC		
GD	Lot 303 hereon		
GA	Lot 303 hereon		
Right to convey water	RA	Lot 209 hereon	Porirua City Council
Pedestrian Right of Way and Vehicular Maintenance Right of Way	RG	Lot 71 hereon	
	RH		

DP 442029 - CSD Plan  
 Generated on 22/12/2011 3:37pm  
 Page 36 of 65

Schedule / Memorandum

DP 442029

Proposed Schedule of Easements in Gross			
Purpose/Interest	Shown	Servient Tenement	Grantee
Right to drain sewage	Z	Lot 3007 DP 329412	Porirua City Council

Schedule of Existing Easements in Gross				
Purpose/Interest	Shown	Servient Tenement	Created By	Grantee
Right to drain water	ZA (CI on DP 422318)	Lot 301 hereon	8257808.19	Porirua City Council

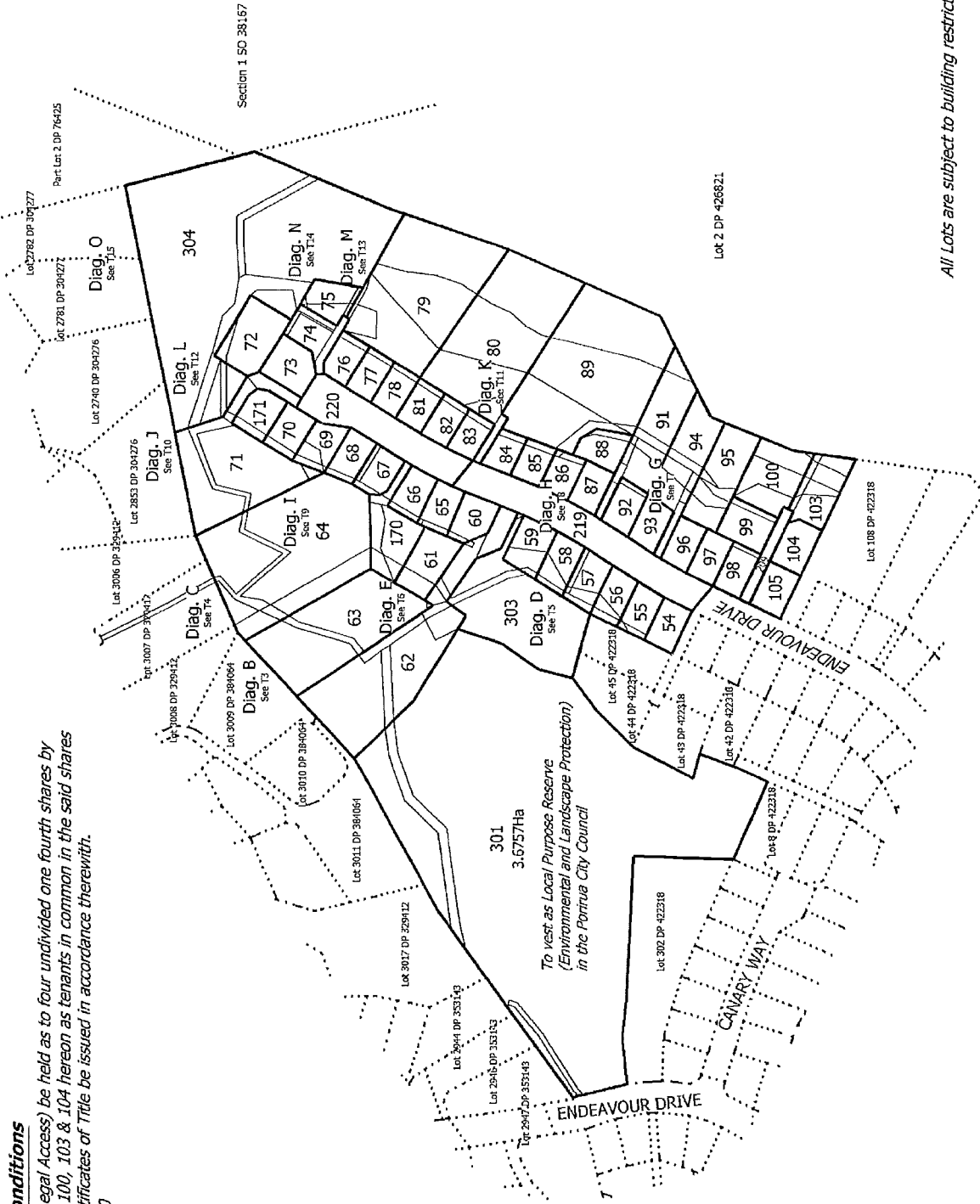
Schedule of Easements to be Surrendered			
Purpose/Interest	Shown	Servient Tenement	Created By
Right to convey gas	G1 on DP 422318	Lot 400 DP 422318	8476091.31

N:\1850\000431\_15\400 Tech\LT survey\DP 442029 - Easement Schedule v4.xls



**Amalgamation Conditions**

That Lot 209 hereon (Legal Access) be held as to four undivided one fourth shares by the owners of Lots 99, 100, 103 & 104 hereon as tenants in common in the said shares and that individual Certificates of Title be issued in accordance therewith.  
DLR Reference: 449460



All Lots are subject to building restrictions. Refer to CT for details.

T 1/15

Land District: Wellington

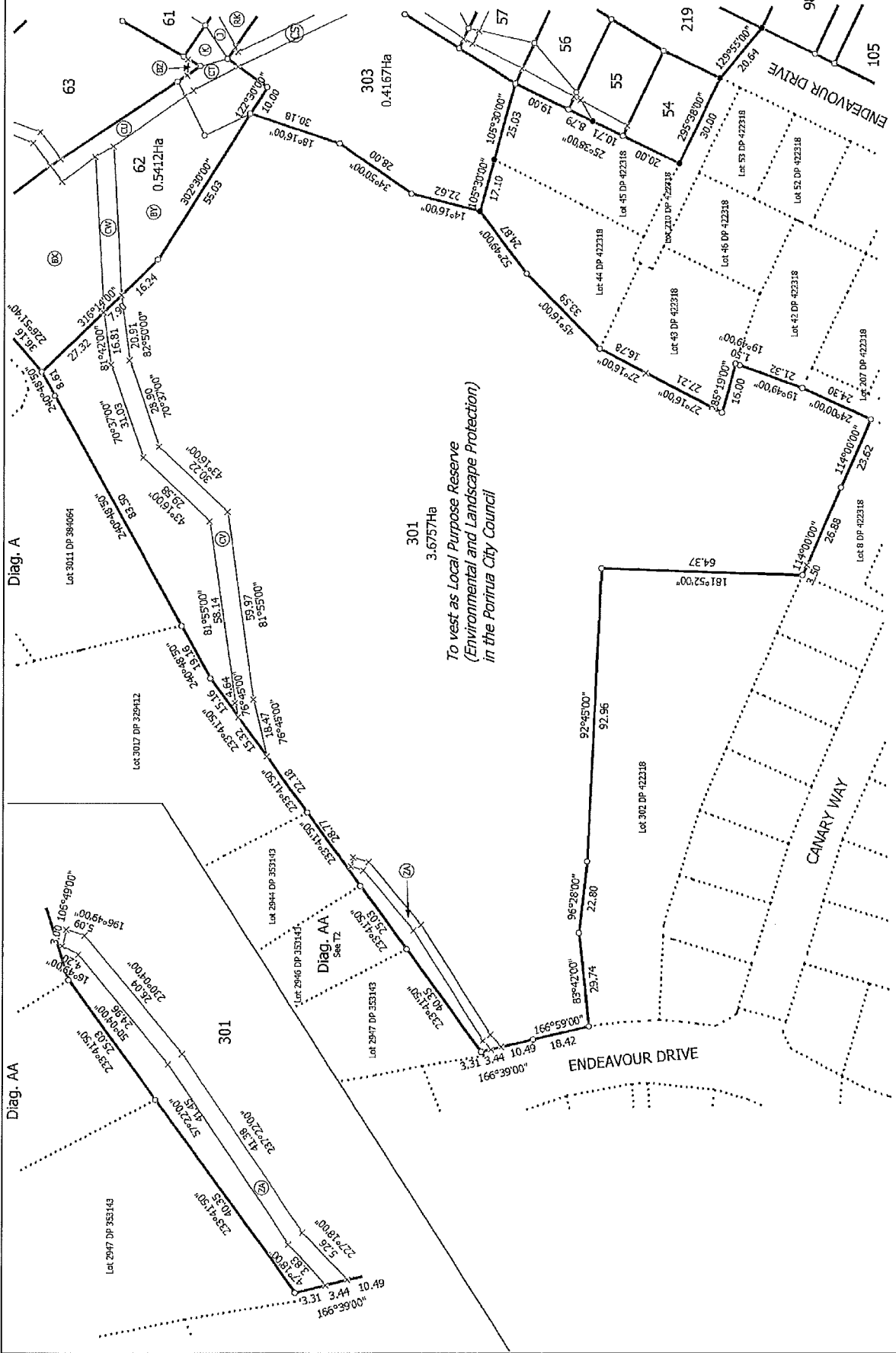
Digitally Generated Plan  
Generated on: 22/12/2011 3:37pm Page 11 of 25

Lots 54-89, 91-100, 103-105, 170, 171, 209, 219, 220, 301, 303 & 304 Being a Subdivision of Lot 400 DP 422318 and Easements over Lot 3007 DP 329412

Surveyor: Matthew John Hayward  
Firm: Harrison Grierson Consultants Ltd (A)

Title Plan  
LT 442029  
Approved on: 22/12/2011

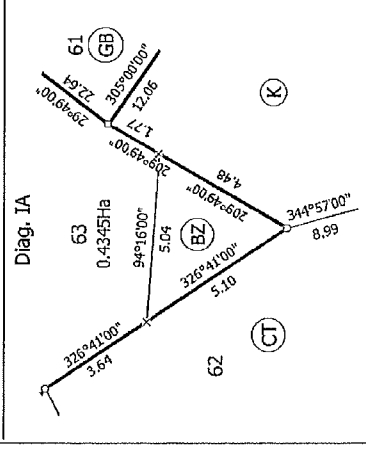
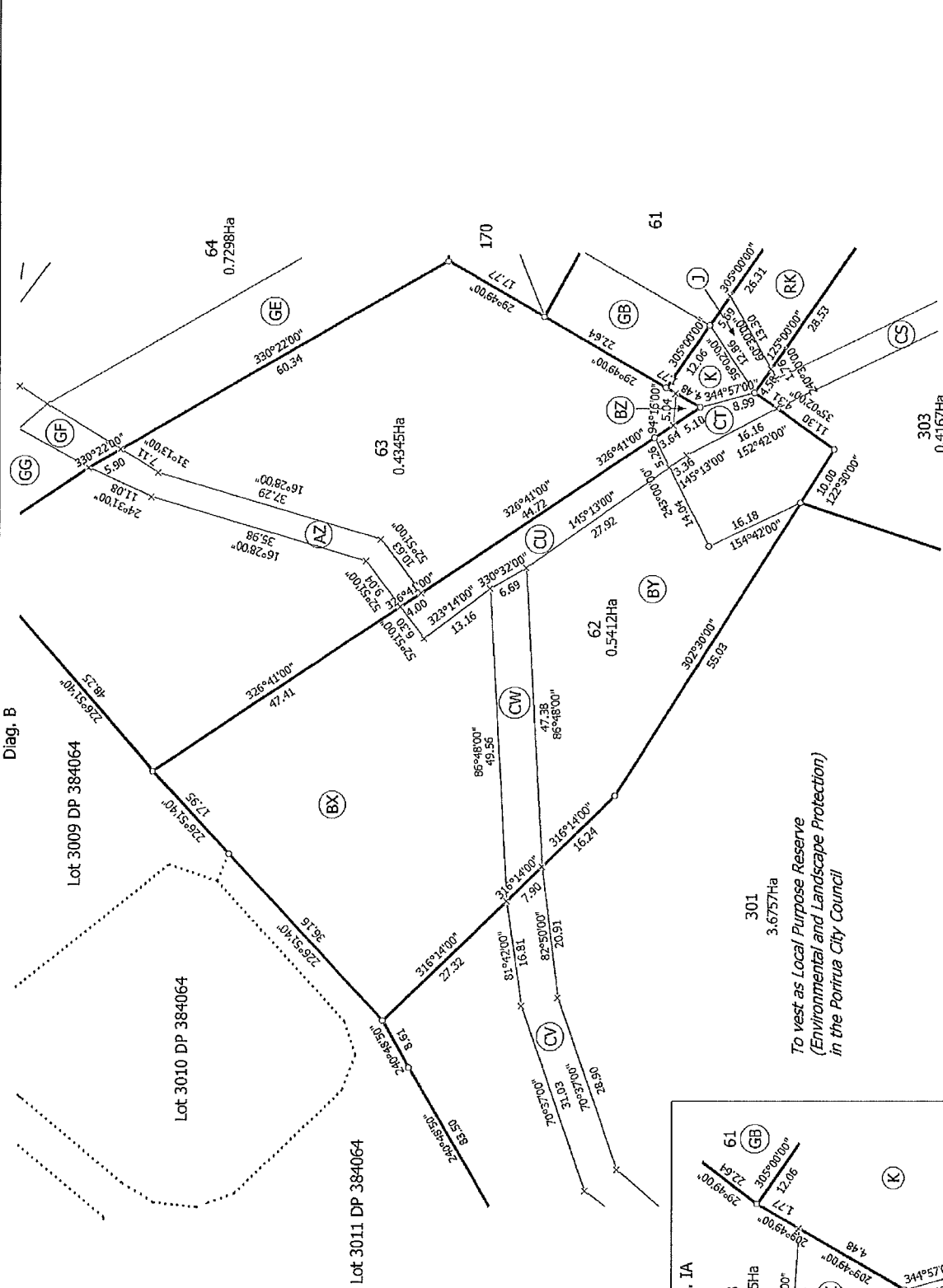
Vertical text on the right edge of the page, likely a scanning artifact or page number.



**301**  
3.6757Ha  
*To vest as Local Purpose Reserve  
(Environmental and Landscape Protection)  
in the Porirua City Council*

T 2715

Land District Wellington	Surveyor: Matthew John Hayward Firm: Harrison Ghieson Consultants Ltd (Au)	Title Plan LT 442029 Approved on: 22/12/2011
<p><b>Lots 54-89, 91-100, 103-105, 170, 171, 209, 219, 220, 301, 303 &amp; 304 Being a Subdivision of Lot 400 DP 422318 and Easements over Lot 3007 DP 329412</b></p>		
Digitally Generated Plan Generated on: 22/12/2011 3:37pm Page 12 of 25		



Diag. B

Lot 3009 DP 384064

Lot 3010 DP 384064

Lot 3011 DP 384064

301 3.6757Ha

To vest as Local Purpose Reserve  
(Environmental and Landscape Protection)  
in the Porirua City Council

303 0.4167Ha

304 0.4167Ha

307 0.4167Ha

308 0.4167Ha

309 0.4167Ha

310 0.4167Ha

311 0.4167Ha

312 0.4167Ha

313 0.4167Ha

314 0.4167Ha

315 0.4167Ha

316 0.4167Ha

317 0.4167Ha

318 0.4167Ha

319 0.4167Ha

320 0.4167Ha

321 0.4167Ha

322 0.4167Ha

323 0.4167Ha

324 0.4167Ha

325 0.4167Ha

326 0.4167Ha

327 0.4167Ha

328 0.4167Ha

329 0.4167Ha

330 0.4167Ha

331 0.4167Ha

332 0.4167Ha

333 0.4167Ha

334 0.4167Ha

335 0.4167Ha

336 0.4167Ha

337 0.4167Ha

338 0.4167Ha

339 0.4167Ha

340 0.4167Ha

341 0.4167Ha

342 0.4167Ha

343 0.4167Ha

344 0.4167Ha

345 0.4167Ha

346 0.4167Ha

347 0.4167Ha

348 0.4167Ha

349 0.4167Ha

350 0.4167Ha

351 0.4167Ha

352 0.4167Ha

353 0.4167Ha

354 0.4167Ha

355 0.4167Ha

356 0.4167Ha

357 0.4167Ha

358 0.4167Ha

359 0.4167Ha

360 0.4167Ha

361 0.4167Ha

362 0.4167Ha

363 0.4167Ha

364 0.4167Ha

365 0.4167Ha

366 0.4167Ha

367 0.4167Ha

368 0.4167Ha

369 0.4167Ha

370 0.4167Ha

371 0.4167Ha

372 0.4167Ha

373 0.4167Ha

374 0.4167Ha

375 0.4167Ha

376 0.4167Ha

377 0.4167Ha

378 0.4167Ha

379 0.4167Ha

380 0.4167Ha

381 0.4167Ha

382 0.4167Ha

383 0.4167Ha

384 0.4167Ha

385 0.4167Ha

386 0.4167Ha

387 0.4167Ha

388 0.4167Ha

389 0.4167Ha

390 0.4167Ha

391 0.4167Ha

392 0.4167Ha

393 0.4167Ha

394 0.4167Ha

395 0.4167Ha

396 0.4167Ha

397 0.4167Ha

398 0.4167Ha

399 0.4167Ha

400 0.4167Ha

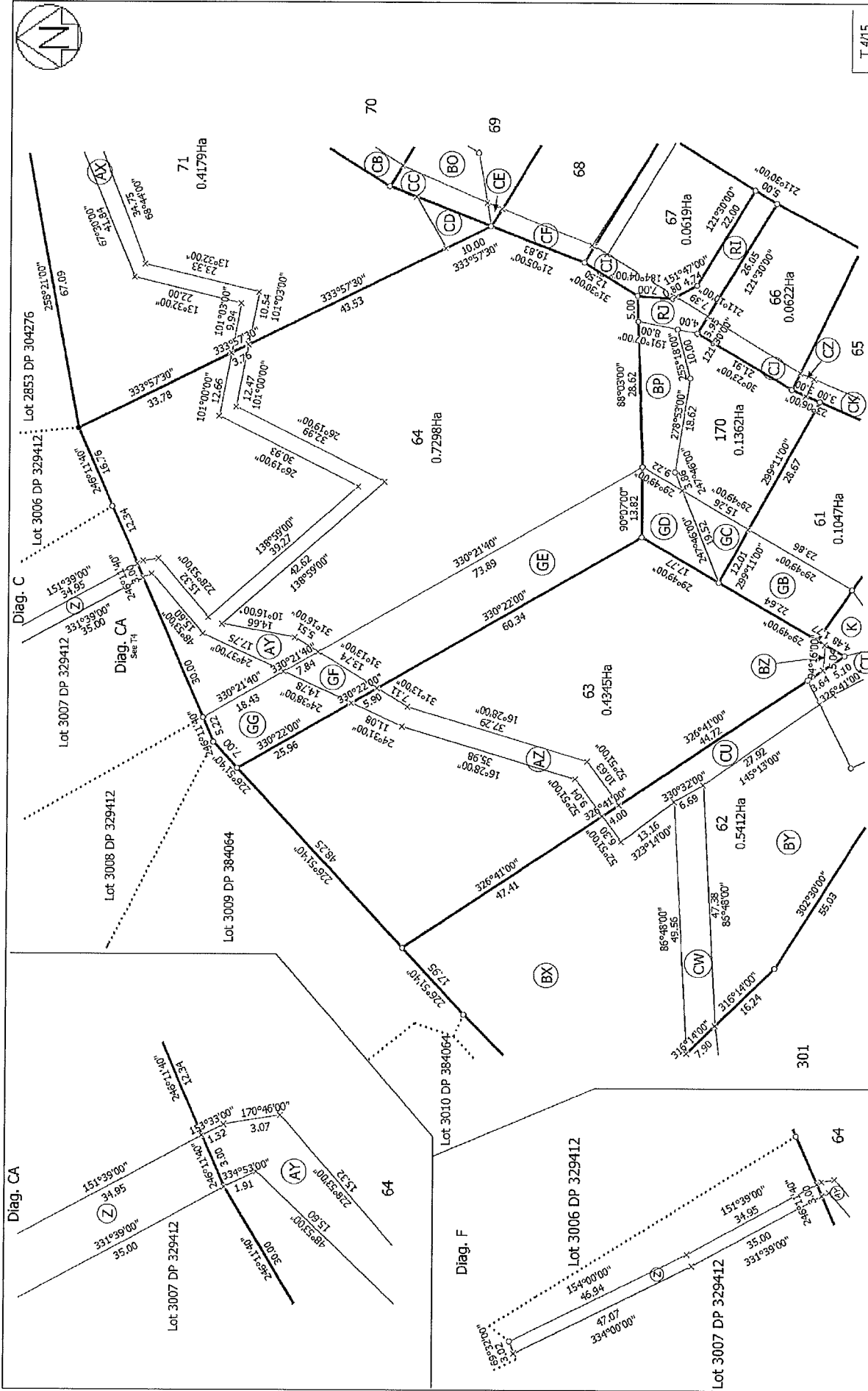
T 3/15

Title Plan  
LT 442029  
Approved on: 22/12/2011

Surveyor: Matthew John Hayward  
Firm: Harrison Grierson Consultants Ltd (A/C)

Lots 54-89, 91-100, 103-105, 170, 171, 209, 219, 220, 301, 303 & 304 Being a  
Subdivision of Lot 400 DP 422318 and Easements over Lot 3007 DP 329412

Land District: Wellington  
Digitally Generated Plan  
Generated on: 22/12/2011 3:37pm Page 13 of 25



T 4/15

Title Plan  
LT 442029  
Approved on: 22/12/2011

Surveyor: Matthew John Hayward  
Firm: Harrison Gibson Consultants Ltd (Au.)

Lots 54-89, 91-100, 103-105, 170, 171, 209, 219, 220, 301, 303 & 304 Being a  
Subdivision of Lot 400 DP 422318 and Easements over Lot 3007 DP 329412

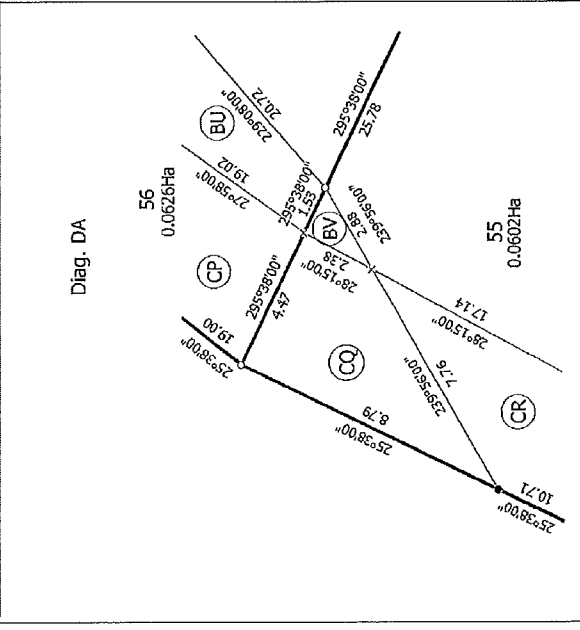
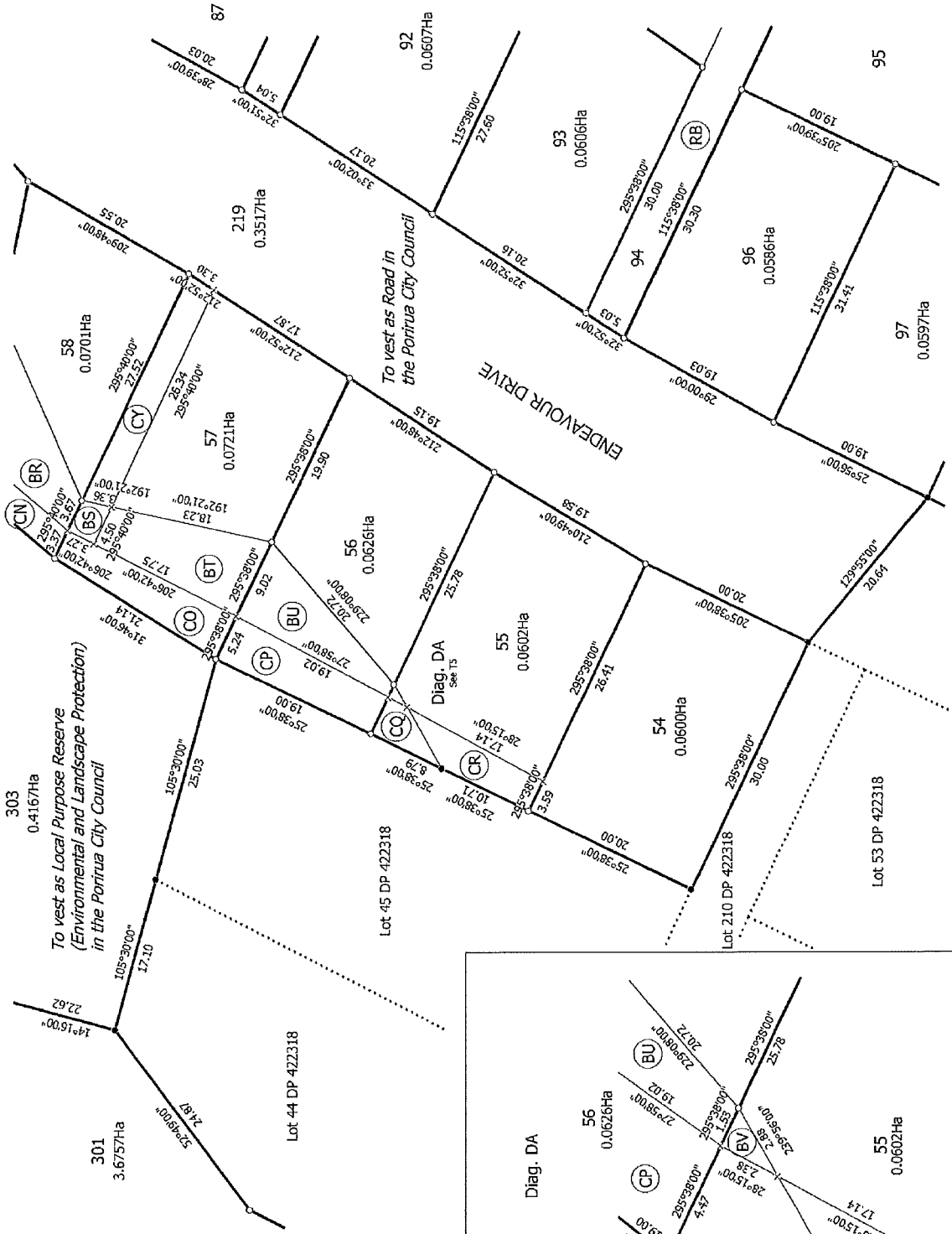
Land District: Wellington  
Digitally Generated Plan  
Generated on: 22/12/2011 3:37pm Page 14 of 25

Horizontal scale: 1:1000  
Vertical scale: 1:1000  
North arrow pointing North



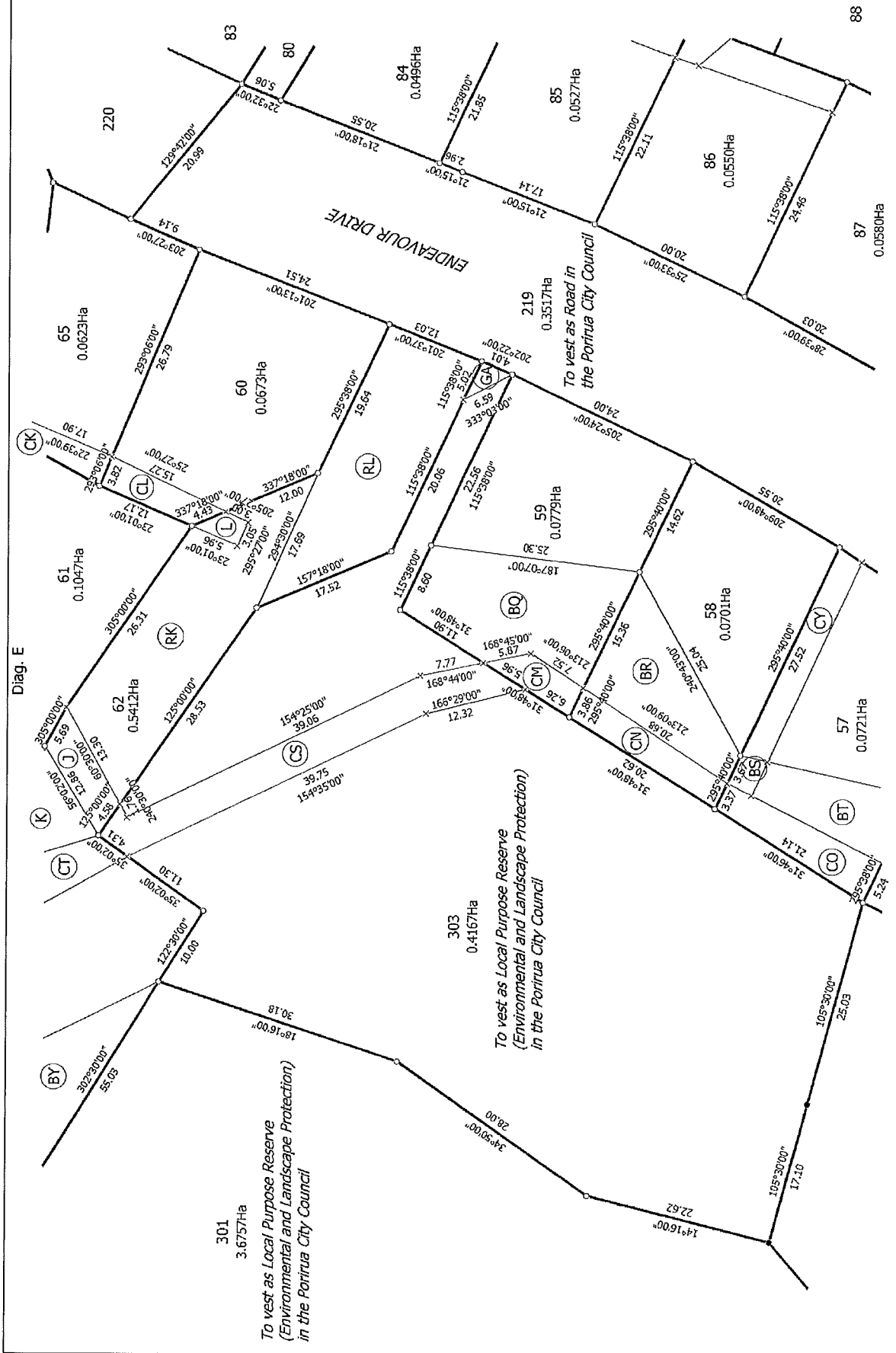
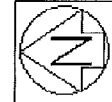


Diag. D



T 5/15

<p>Land District: Wellington</p> <p>Digitally Generated Plan</p> <p>Generated on: 22/12/2011 3:37pm Page 15 of 25</p>	<p>Lots 54-89, 91-100, 103-105, 170, 171, 209, 219, 220, 301, 303 &amp; 304 Being a Subdivision of Lot 400 DP 422318 and Easements over Lot 3007 DP 329412</p>	<p>Surveyor: Matthew John Hayward</p> <p>Firm: Hamison Gifferson Consultants Ltd (Au.)</p>	<p>Title Plan</p> <p>LT 442029</p> <p>Approved on: 22/12/2011</p>
---	--	--	---



Diag. E

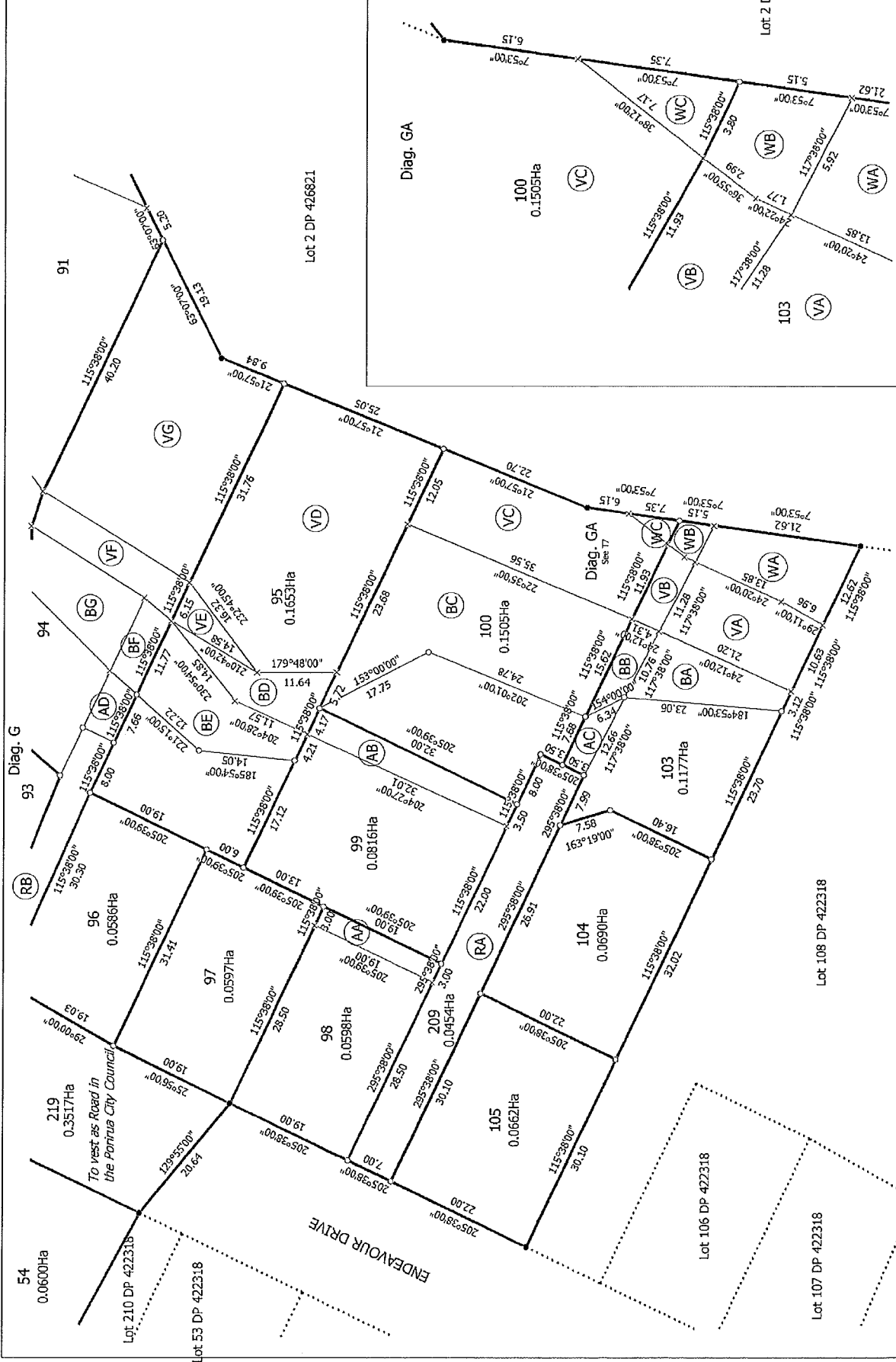
T 6/15

**Title Plan**  
LT 442029  
Approved on: 22/12/2011

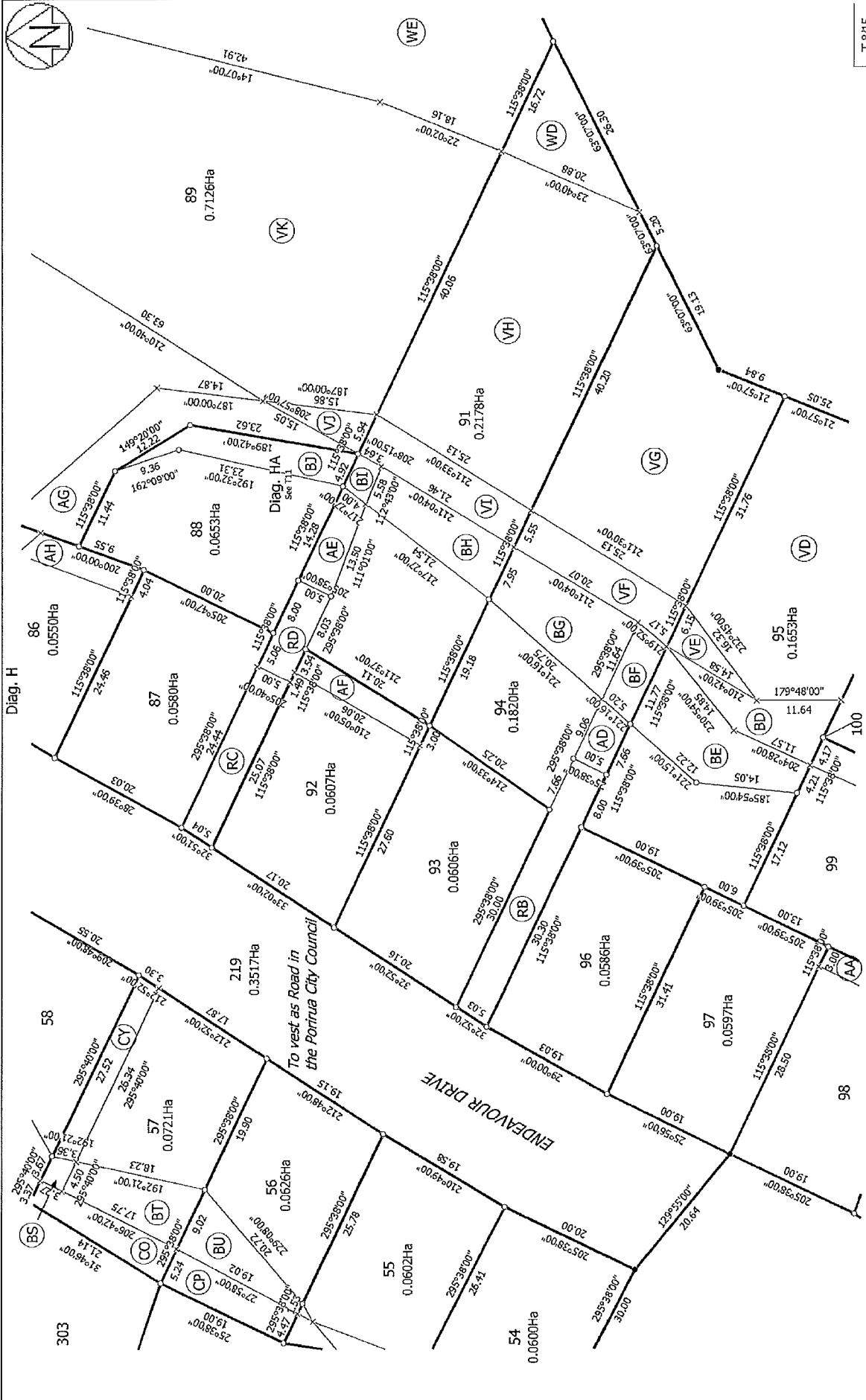
Surveyor: Matthew John Heyward  
Firm: Harrison Grierson Consultants Ltd (A)

Lots 54-89, 91-100, 103-105, 170, 171, 209, 219, 220, 301, 303 & 304 Being a Subdivision of Lot 400 DP 422318 and Easements over Lot 307 DP 329412

Land District Wellington  
Digitally Generated Plan  
Generated on: 22/12/2011 3:57pm Page 16 of 25



<p>Land District: Wellington</p> <p>Digitally Generated Plan</p> <p>Generated on: 22/12/2011 3:37pm Page: 17 of 25</p>	<p>Lots 54-89, 91-100, 103-105, 170, 171, 209, 219, 220, 301, 303 &amp; 304 Being a Subdivision of Lot 400 DP 422318 and Easements over Lot 3007 DP 329412</p>	<p>Surveyor: Matthew John Hayward</p> <p>Firm: Harrison Gleason Consultants Ltd (A.U.)</p>	<p>Title Plan</p> <p>LT 442029</p> <p>Approved on: 22/12/2011</p> <p>T 7/15</p>
--	--	--	---



T 8715

Surveyor: Matthew John Hayward  
 Firm: Hamison Grierson Consultants Ltd (A/C)

Title Plan  
 LT 442029  
 Approved on: 22/12/2011

Land District: Wellington  
 Digitally Generated Plan  
 Generated on: 22/12/2011 3:37pm Page 16 of 25

Diag. H

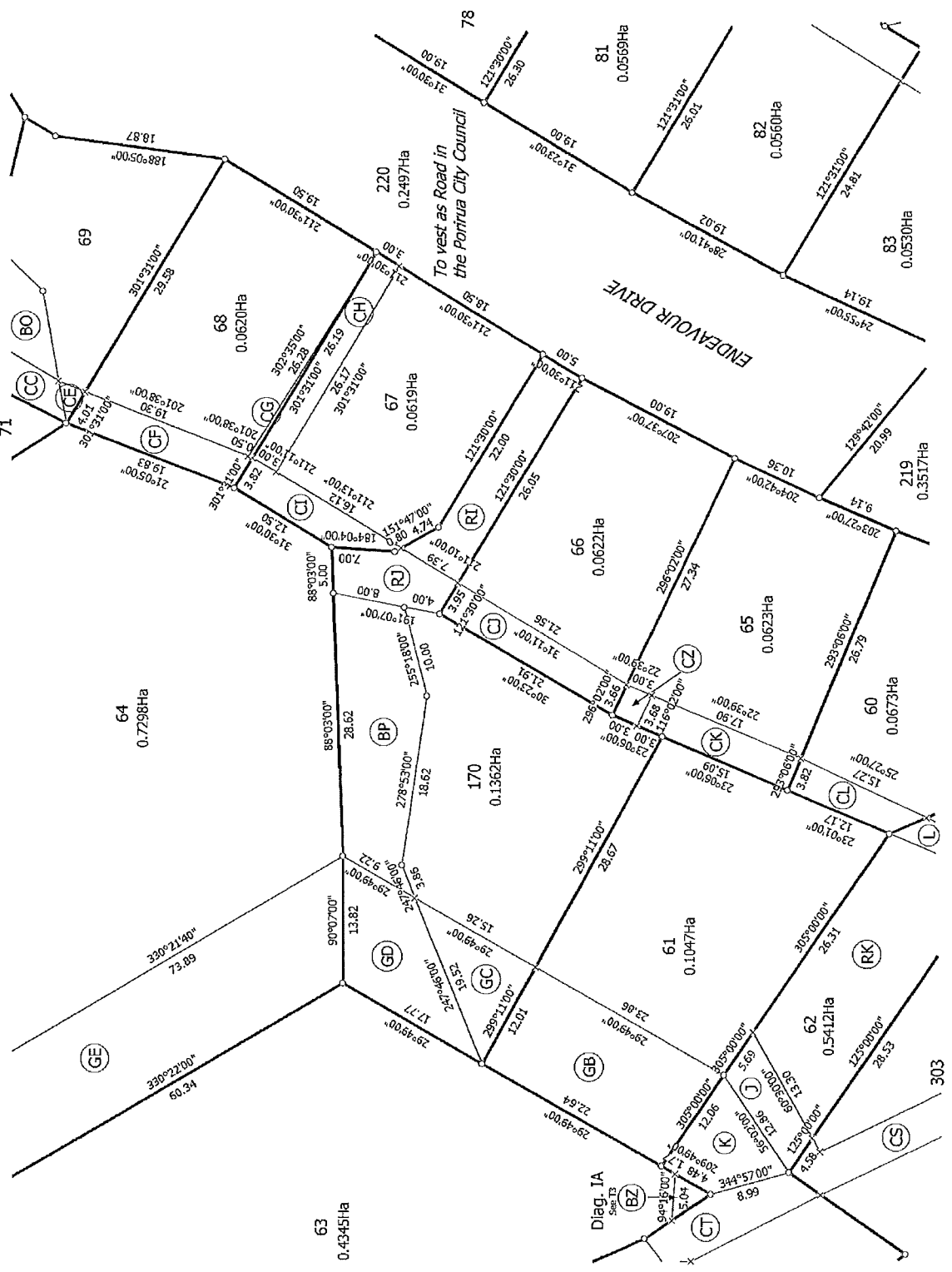
To vest as Road in  
 the Porirua City Council

ENDAVOUR DRIVE





Diag. I



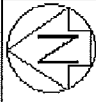
T 9/15

Title Plan  
 LT 442029  
 Approved on: 22/12/2011

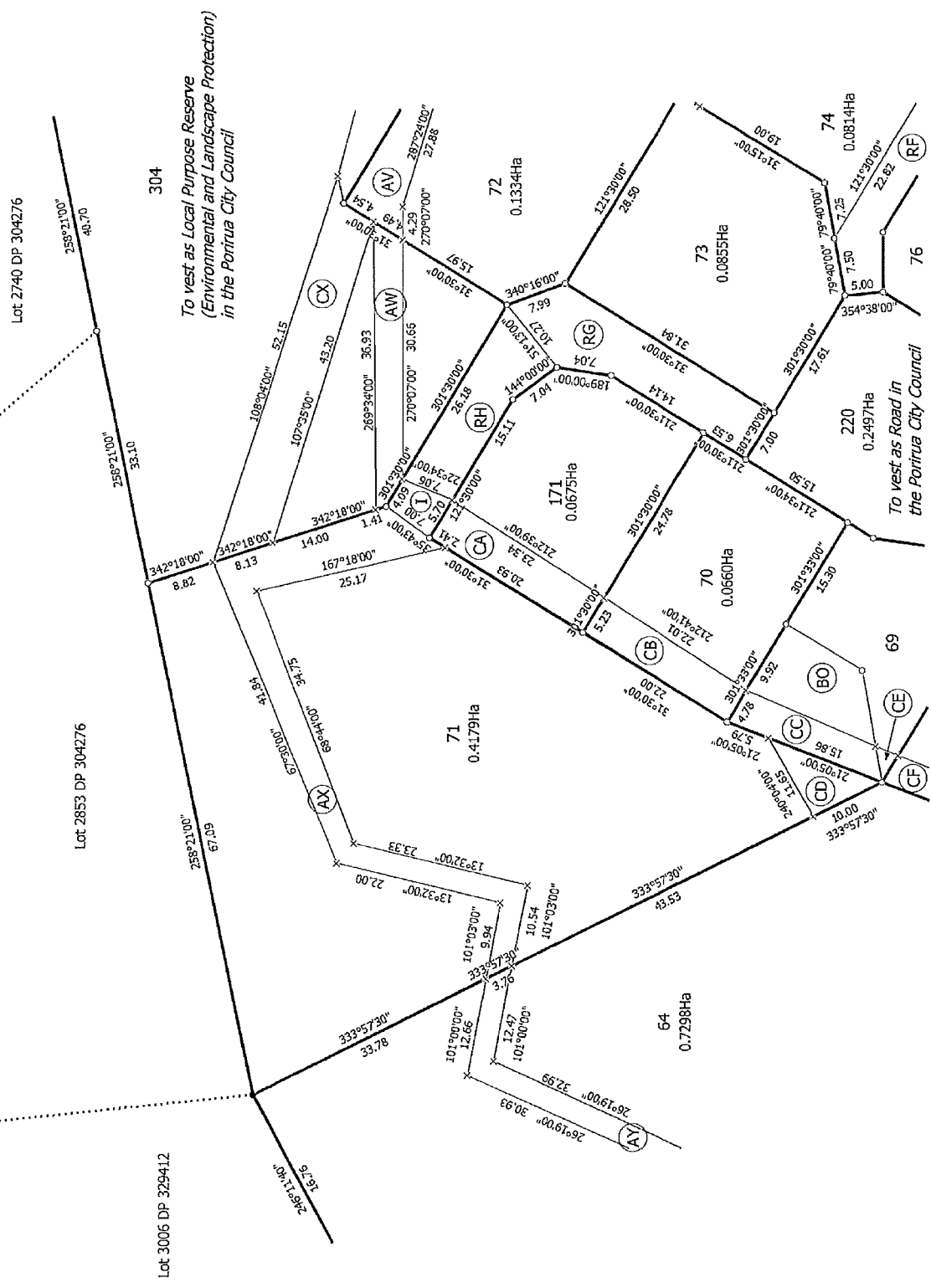
Surveyor: Matthew John Hayward  
 Firm: Harrison Giersson Consultants Ltd (A/C)

Lots 54-89, 91-100, 103-105, 170, 171, 209, 219, 220, 301, 303 & 304 Being a  
 Subdivision of Lot 400 DP 422318 and Easements over Lot 3007 DP 329412

Lanc District Wellington  
 Digitally Generated Plan  
 Generated on: 22/12/2011 3:37pm Page 19 of 25



Diag. J



Lot 2740 DP 304276  
 258°21'00" 48.70  
 258°21'00" 33.10  
 304  
 To vest as Local Purpose Reserve  
 (Environmental and Landscape Protection)  
 in the Porirua City Council

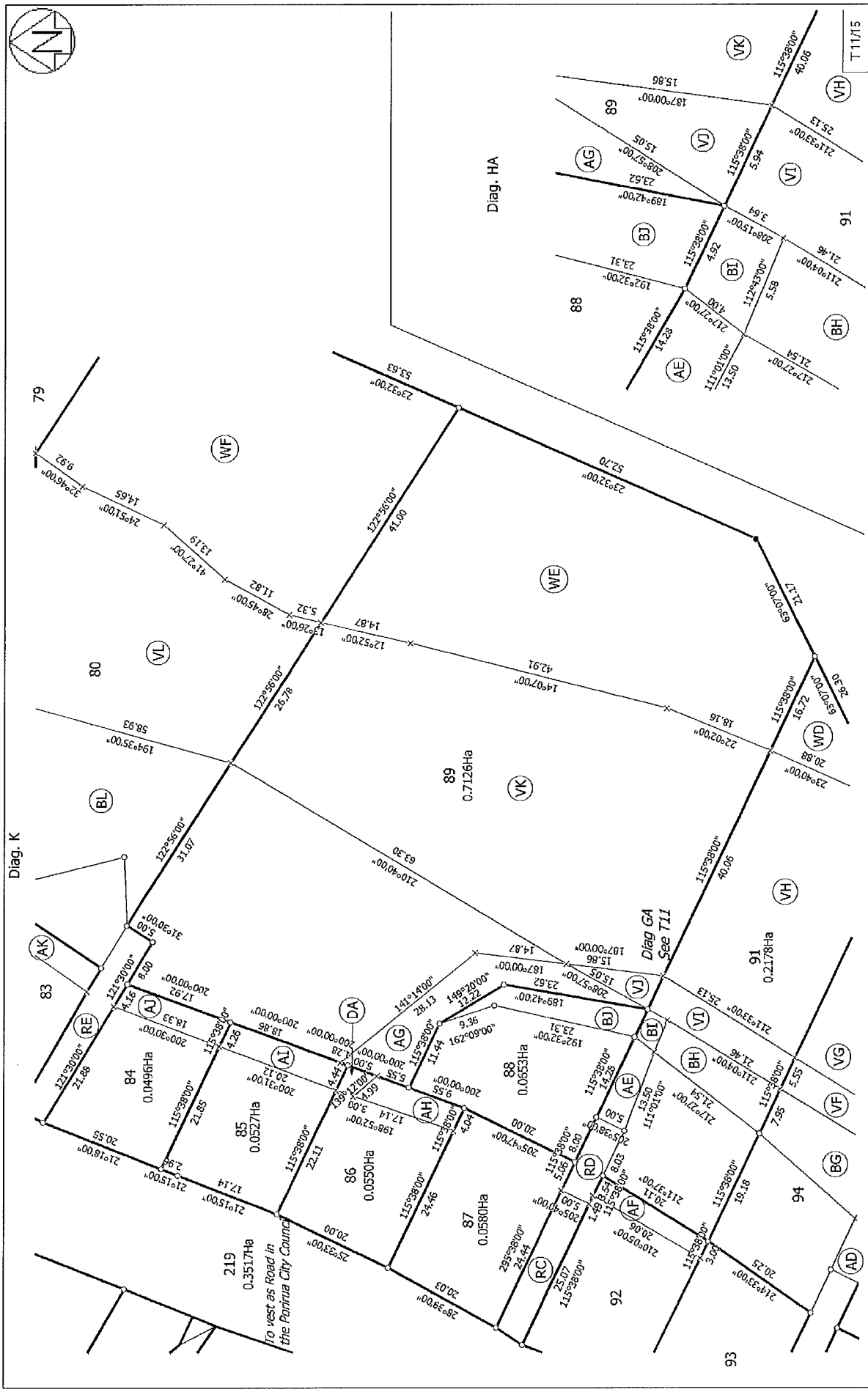
Lot 2853 DP 304276  
 258°21'00" 67.09  
 342°18'00" 8.02  
 304

Lot 3005 DP 329412  
 267°11'00" 15.76  
 258°21'00" 67.09

Lot 2740 DP 304276  
 258°21'00" 48.70  
 258°21'00" 33.10

T 10115

<p>Land District: Wellington</p>	<p>Lots 54-89, 91-100, 103-105, 170, 171, 209, 219, 220, 301, 303 &amp; 304 Being a Subdivision of Lot 400 DP 422318 and Easements over Lot 3007 DP 329412</p>	<p>Title Plan        LT 442029        Approved on: 22/12/2011</p>
<p>Digitally Generated Plan        Generated on: 22/12/2011 3:37pm Page 20 of 25</p>	<p>Surveyor: Matthew John Hayward        Firm: Harrison Grierson Consultants Ltd (A/L)</p>	<p>Approved on: 22/12/2011</p>



Diag. K

Diag. HA

79

80

83

84

85

86

87

88

89

88

89

91

92

93

94

96

98

99

100

103

105

170

171

209

219

220

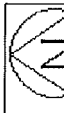
301

303

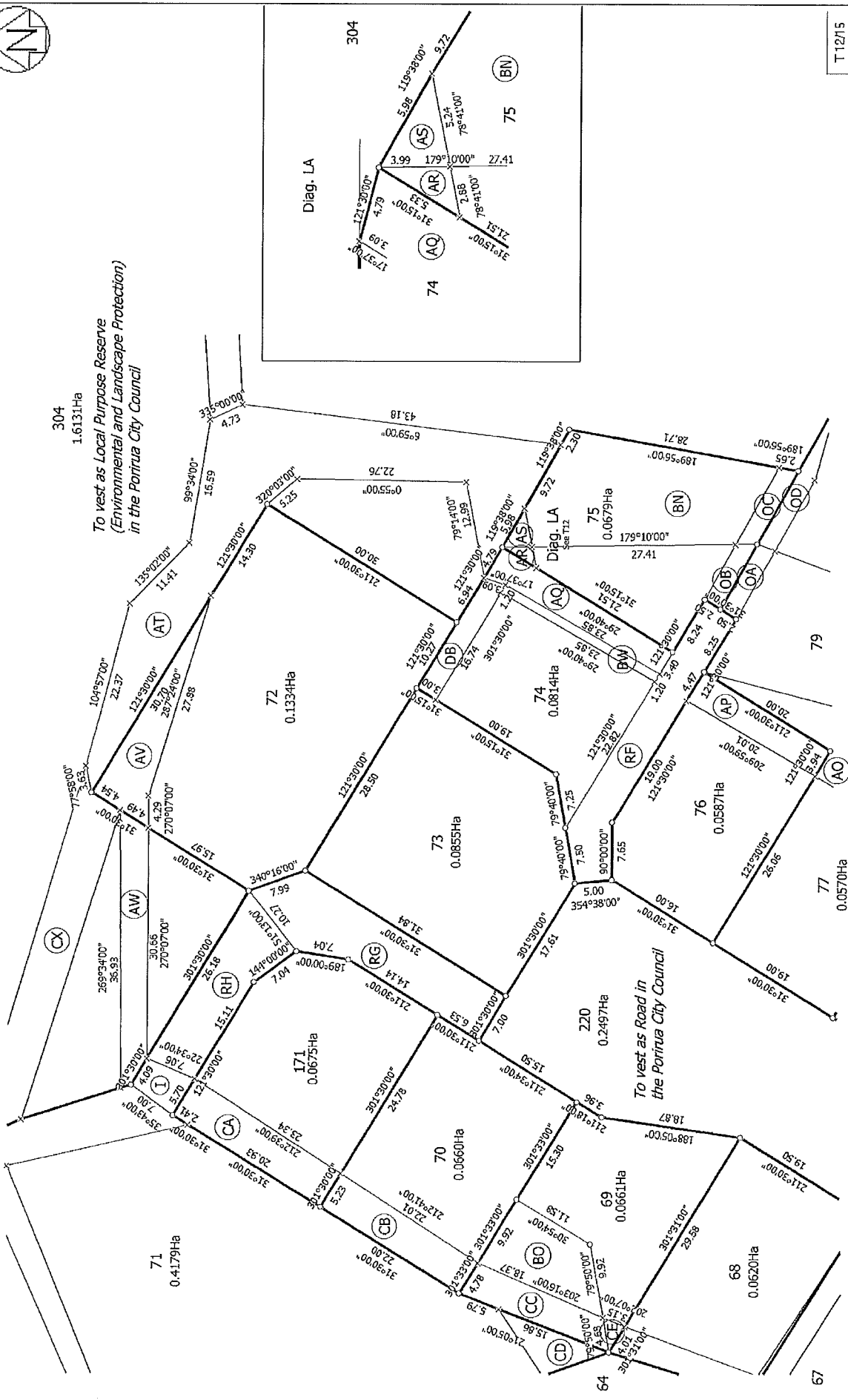
304

<p>Land District: Wellington</p> <p>Digitally Generated Plan</p> <p>Generated on: 22/12/2011 13:27pm Page 21 of 25</p>	<p>Lots 54-89, 91-100, 103-105, 170, 171, 209, 219, 220, 301, 303 &amp; 304 Being a Subdivision of Lot 400 DP 422318 and Easements over Lot 3007 DP 329412</p>	<p>Surveyor: Matthew John Hayward</p> <p>Firm: Harrison Gieson Consultants Ltd (A/C)</p>	<p>Title Plan</p> <p>LT 442029</p> <p>Approved on: 22/12/2011</p>
--	--	--	---

Digitally Generated Plan - Surveyed and Checked by [Name], Approved by [Name], Generated on: 22/12/2011 13:27pm Page 21 of 25



Diag. L



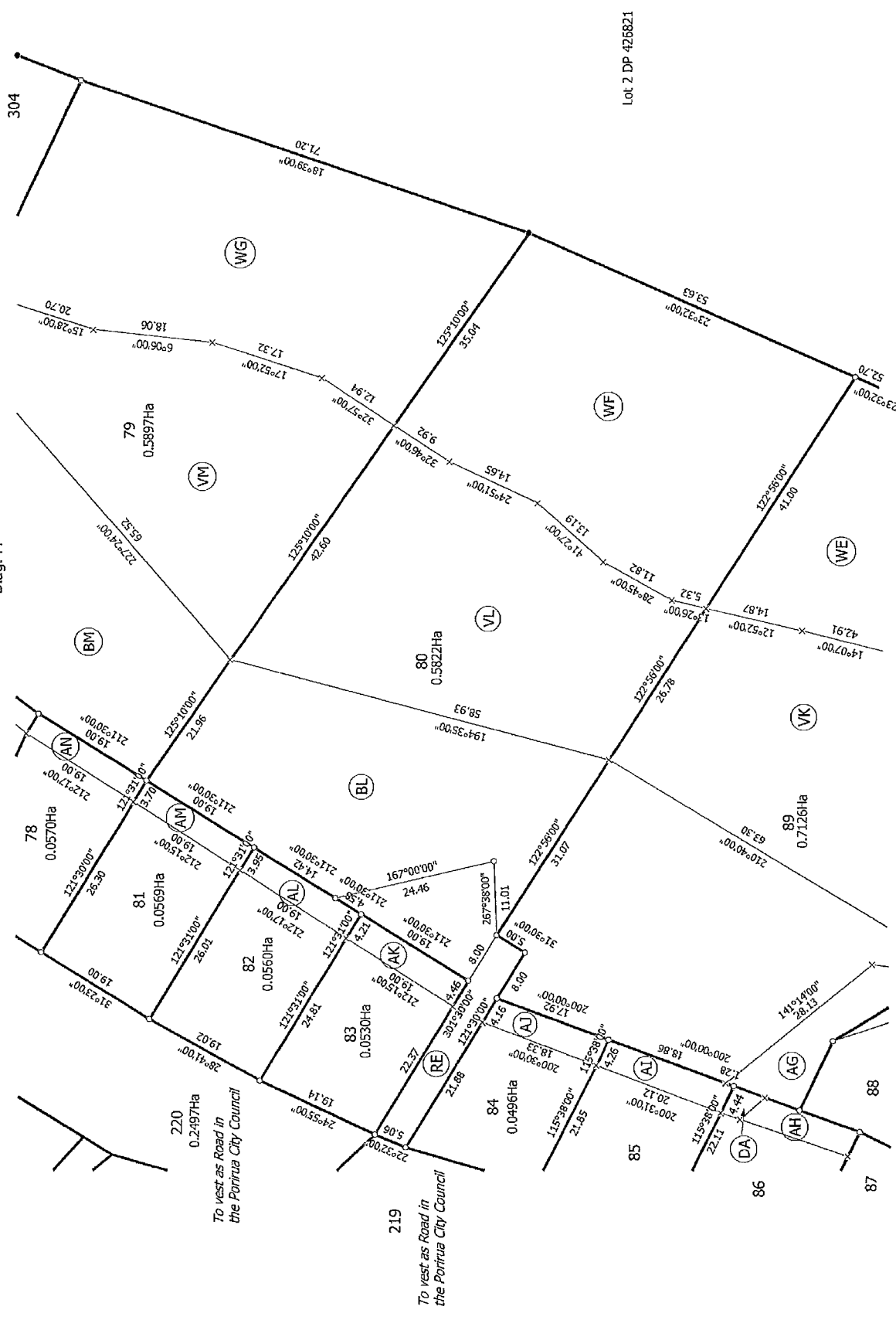
Land District: Wellington	Surveyor: Matthew John Hayward Firm: Harrison Grierson Consultants Ltd (A/L)	T-12/15
Diagonally Generated Plan Generated on: 22/12/2011 3:37pm Page 22 of 25	<b>Lots 54-89, 91-100, 103-105, 170, 171, 209, 219, 220, 301, 303 &amp; 304 Being a Subdivision of Lot 400 DP 422318 and Easements over Lot 3007 DP 329412</b>	<b>Title Plan LT 442029</b> Approved on: 22/12/2011

Diagonally Generated Plan  
Generated on: 22/12/2011 3:37pm Page 22 of 25



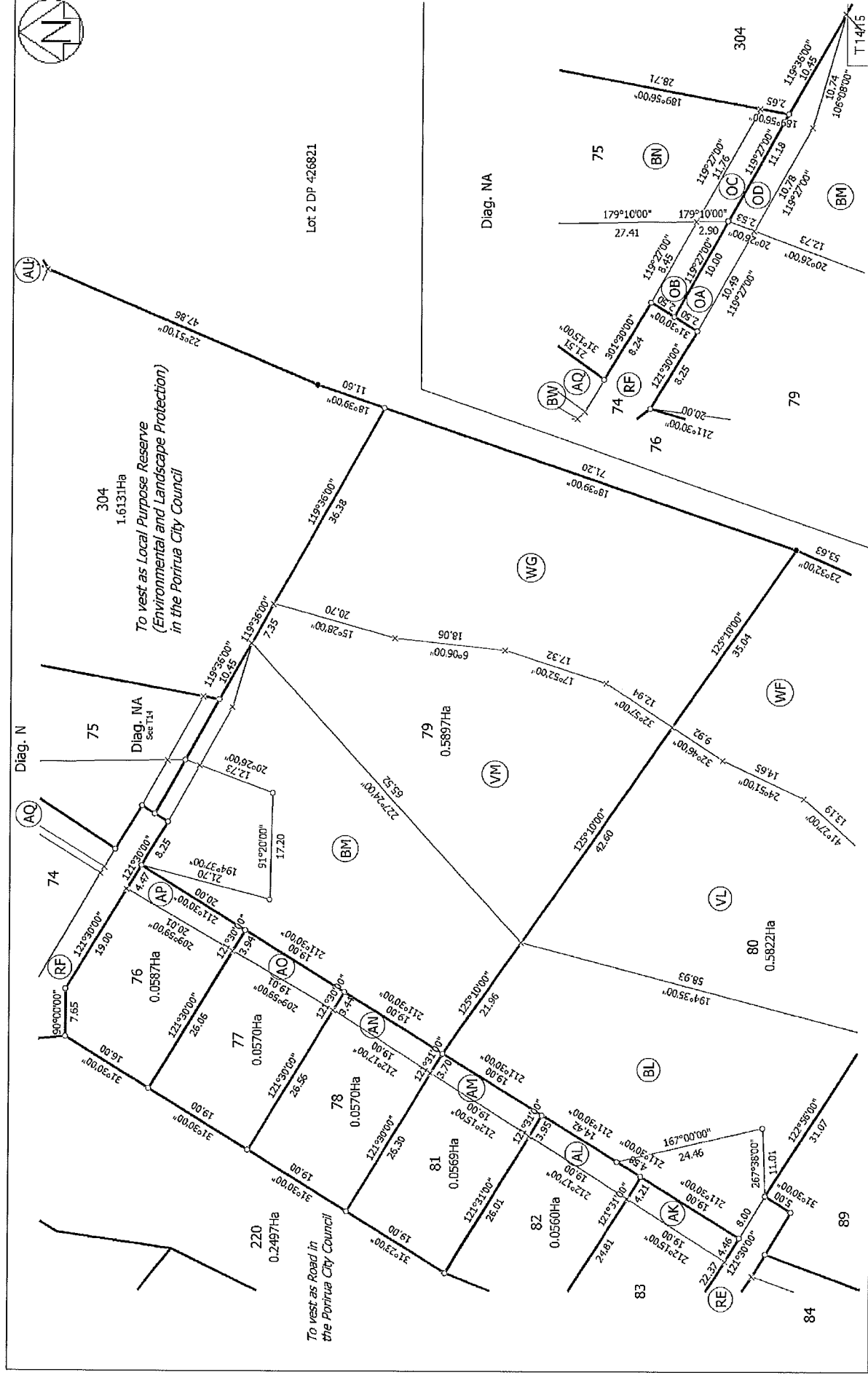


Diag. M



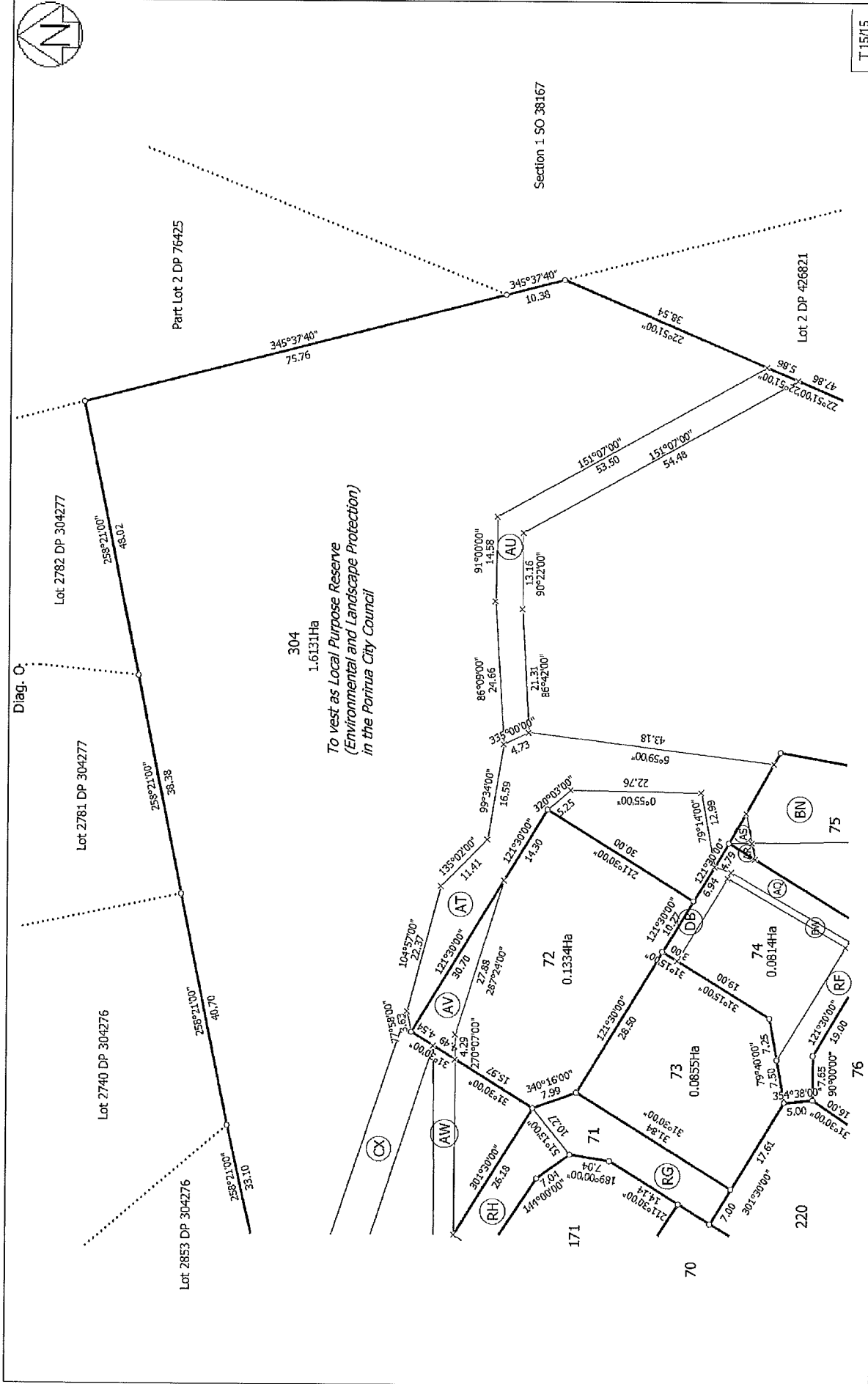
T13/15

<p>Land District Wellington</p> <p>Digitally Generated Plan</p> <p>Generated on: 22/12/2011 3:37pm Page 23 of 25</p>	<p>Lots 54-89, 91-100, 103-105, 170, 171, 209, 219, 220, 301, 303 &amp; 304 Being a Subdivision of Lot 400 DP 422318 and Easements over Lot 3007 DP 329412</p>	<p>Title Plan</p> <p>LT 442029</p> <p>Approved on: 22/12/2011</p>
<p>Surveyor: Matthew John Hayward</p> <p>Firm: Harrison Grierson Consultants Ltd (A/C)</p>		



<p>Land District Wellington</p>	<p>Surveyor: Matthew John Hayward Firm: Harrison Grierson Consultants Ltd (A)</p>	<p>Title Plan LT 442029 Approved on: 22/12/2011</p>
<p>Lots 54-89, 91-100, 103-105, 170, 171, 209, 219, 220, 301, 303 &amp; 304 Being a Subdivision of Lot 400 DP 422318 and Easements over Lot 3007 DP 329412</p>		
<p>Digitally Generated Plan Generated on: 22/12/2011 3:37pm Page 24 of 25</p>		

Copyright © Harrison Grierson Consultants Ltd. All rights reserved. This document is confidential and intended solely for the use of the individual or entity to whom it is addressed. If you have received this document by mistake, please notify us immediately by email or telephone. No liability is accepted for any loss or damage arising from the use of this information.



T 15715

Surveyor: Matthew John Hayward  
Firm: Harrison Gimson Consultants Ltd (A/L)

Title Plan  
LT 442029  
Approved on: 22/12/2011

Lots 54-89, 91-100, 103-105, 170, 171, 209, 219, 220, 301, 303 & 304 Being a  
Subdivision of Lot 400 DP 422318 and Easements over Lot 3007 DP 329412

Land District: Wellington  
Digitally Generated Plan  
Generated on: 22/12/2011 3:37pm Page 25 of 25